

# ***Connecting Cook County***

## ***2040 Long Range Transportation Plan***

***Advisory Committee Working Meeting***  
***February 25, 2014***



Honorable Toni Preckwinkle, President  
Cook County Board of Commissioners



# Meeting Agenda

- Welcome and Introductions
- President Preckwinkle Opening Remarks
- Connecting the Plan to Economic Development
- Project Overview
- Break Out Session – Issue Identification
- Vision Concept Exercise
- Next Steps

# Welcome!

**Ms. Jacky Grimshaw**

Center for Neighborhood  
Technology

**Mr. Jorge Ramirez**

Chicago Federation of Labor

**Ms. Andrea Zopp**

Chicago Urban League

**Ms. Theresa Mintle**

Chicagoland Chamber of  
Commerce

**Mr. Randy Blankenhorn**

CMAP

**Mr. Herman Brewer**

Cook County Bureau  
of Economic Development

**Ms. Rosa Ortiz**

Enterprise Community Partners

**Ms. Deborah Sawyer**

Environmental Design  
International, Inc.

# Welcome!

## **Mr. Roberto Escalante**

Illinois Hispanic Chamber of  
Commerce

## **Ms. MarySue Barrett**

Metropolitan Planning Council

## **Mr. Frank Beal**

Metropolis Strategies

## **President Sandy Frum**

Northwest Municipal Conference

## **Mr. Michael Tang**

National Material L.P.

## **Mayor Paul Braun**

South Suburban Mayors & Managers

## **Mayor Gerald Bennett**

Southwest Conference  
of Mayors

## **Mayor Ronald Serpico**

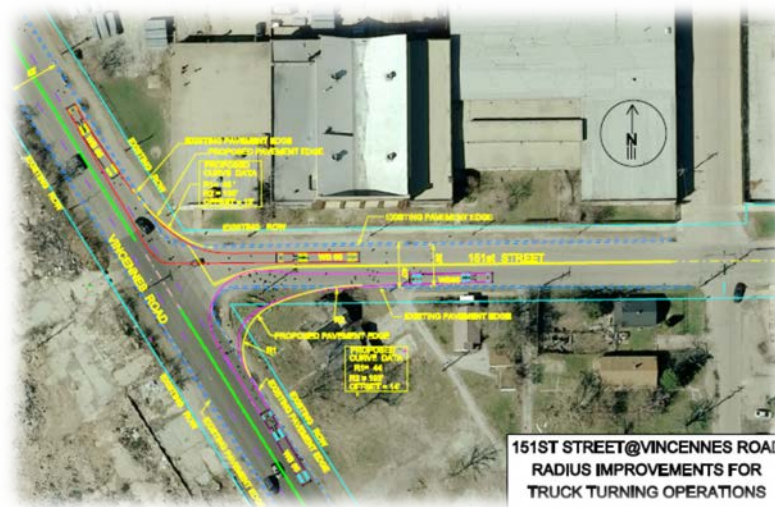
West Central Municipal Conference

## **Ms. Rita Athas**

World Business Chicago

# Transforming the Highway Department

- New Leadership
- Broader Charge; all Modes of Transportation
- More Responsive to Municipal Needs
- Partnerships with Other Transportation Agencies





# Cook County Governing Principles



Fiscal Responsibility



Innovative Leadership



Transparency and Accountability

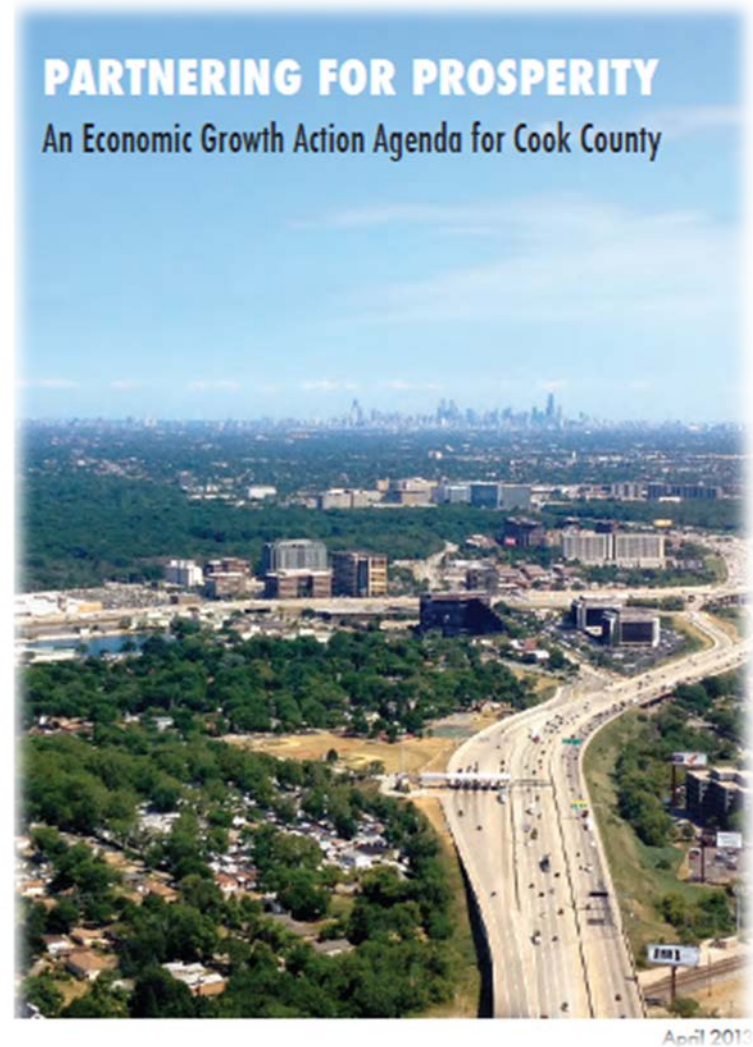


Improved Services

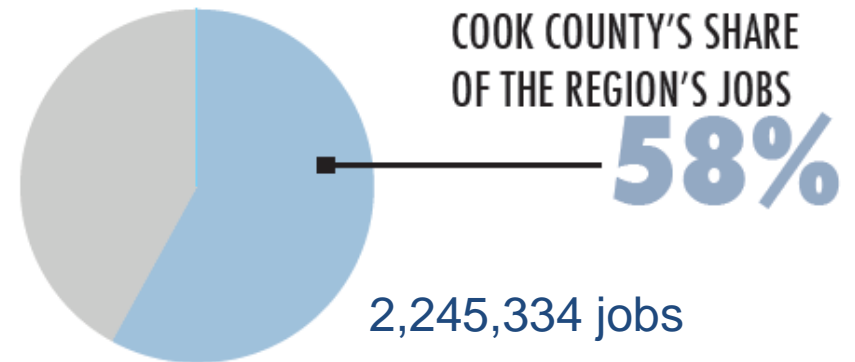
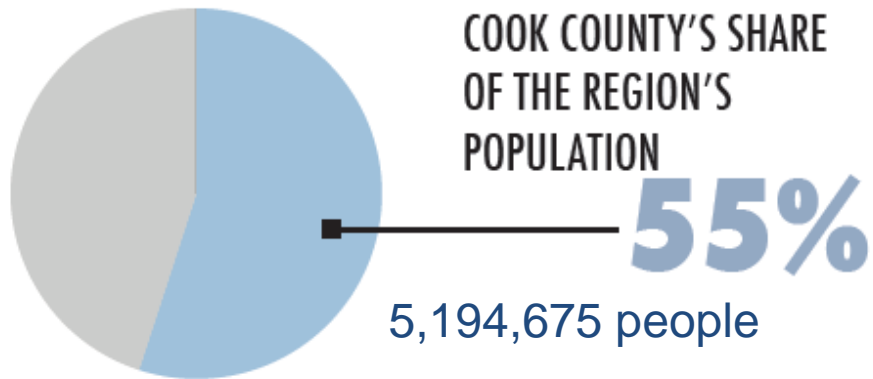
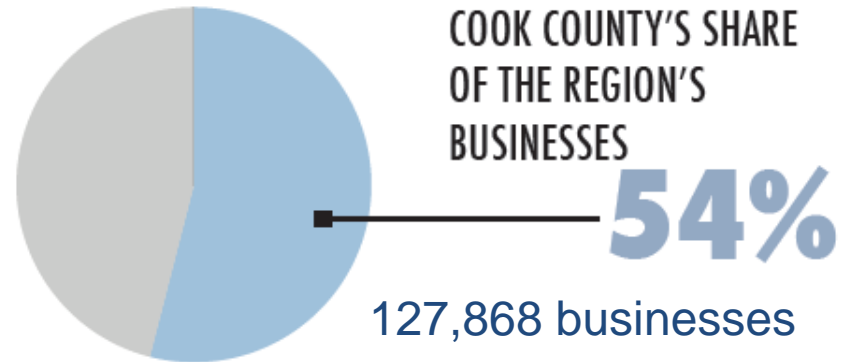
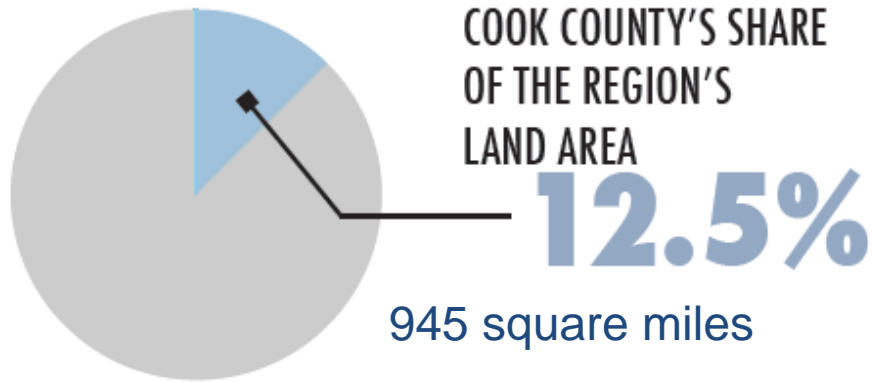
# An Investment in Our Future

A quality transportation infrastructure...

- Enhances economic performance
- Stimulates job and business growth
- Creates stronger communities
- Improves quality of life



# Why Embark on this Plan?

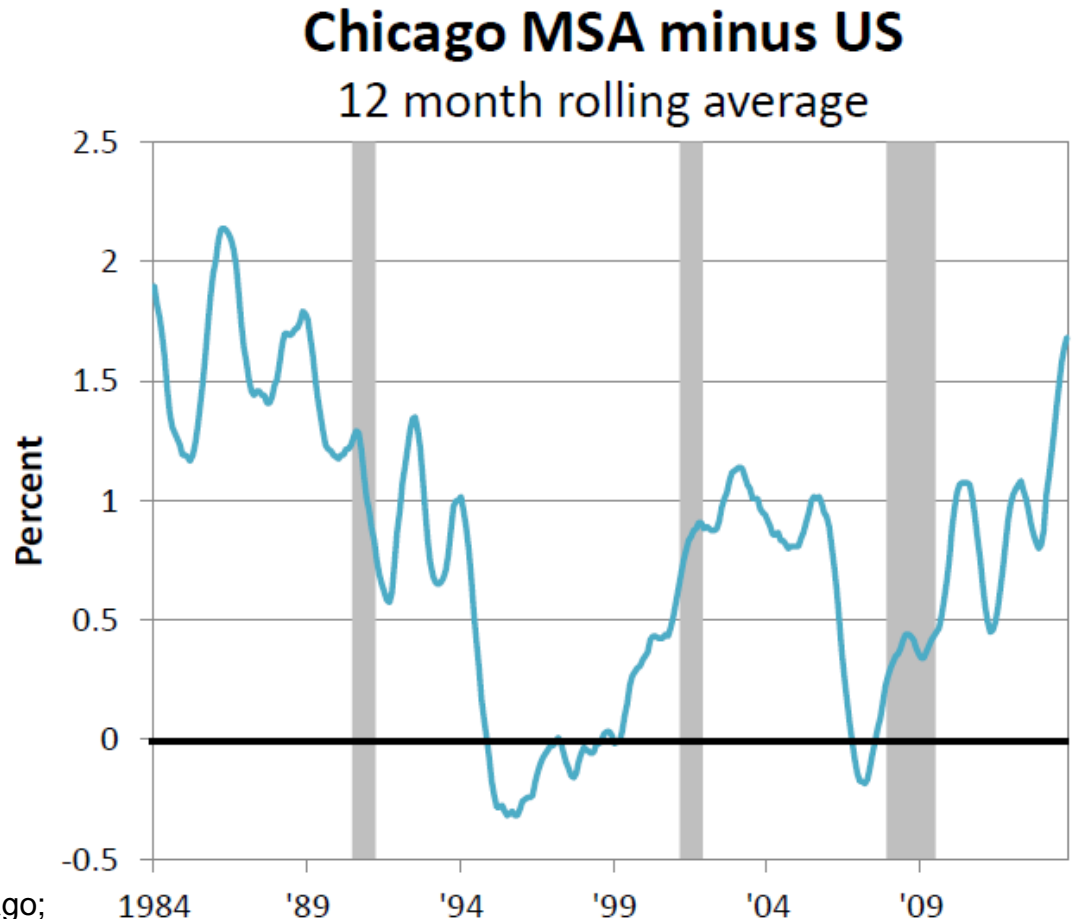


SOURCE: Partnering for Prosperity



# Unemployment Rate

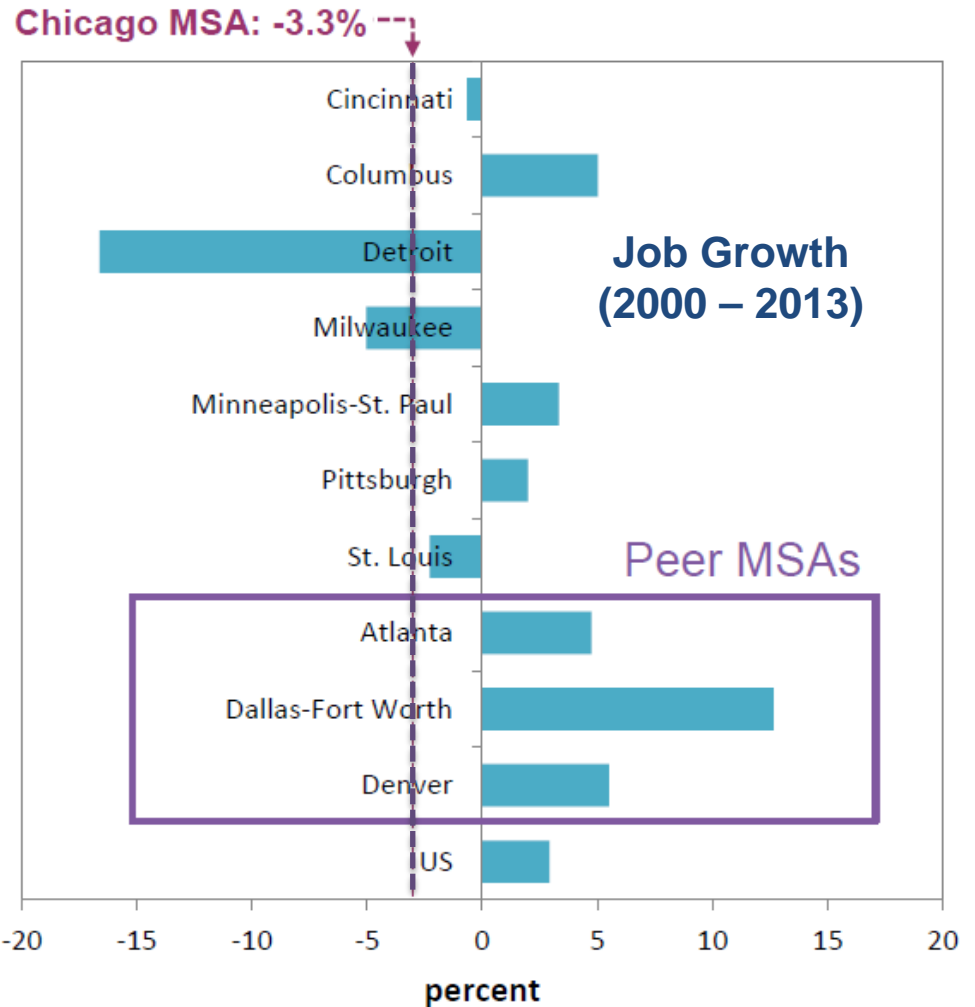
- The Chicago metropolitan area has lagged the U.S. since the late 1990s
- **And it is falling further behind during the current U.S. recovery**



SOURCE: Bill Testa, Federal Reserve Bank of Chicago;  
*Growing our Regional Economy*, December 12, 2013.

# Economic Performance: Job Growth

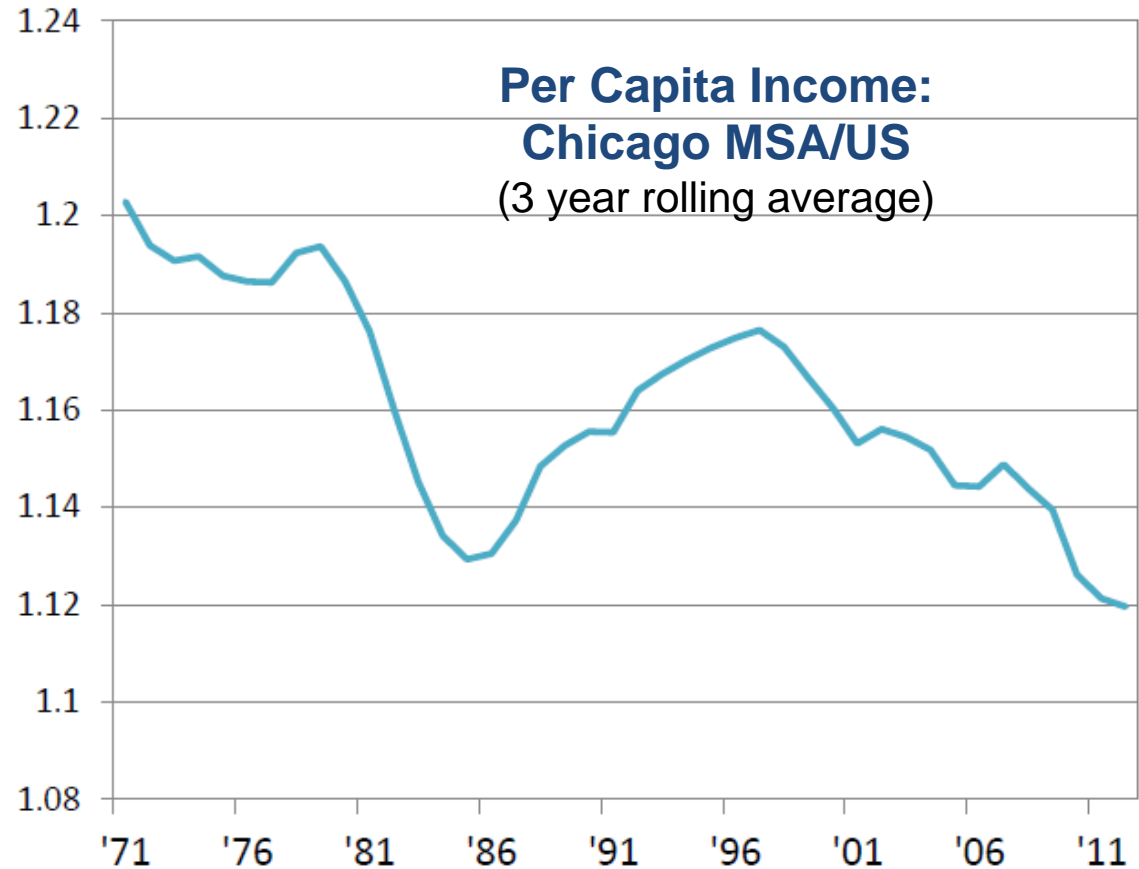
- The region's performance versus other Midwest MSAs is not great either...
- ...even while metro area growth has been slipping among peer MSAs in other regions



SOURCE: Bill Testa, Federal Reserve Bank of Chicago; *Growing our Regional Economy*, December 12, 2013.

# Economic Performance: Per Capita Income

- Per capita incomes have been sliding versus the nation
- Stimulates job and business growth
- Creates stronger communities
- Improves quality of life



SOURCE: Bill Testa, Federal Reserve Bank of Chicago;  
*Growing our Regional Economy*, December 12, 2013.

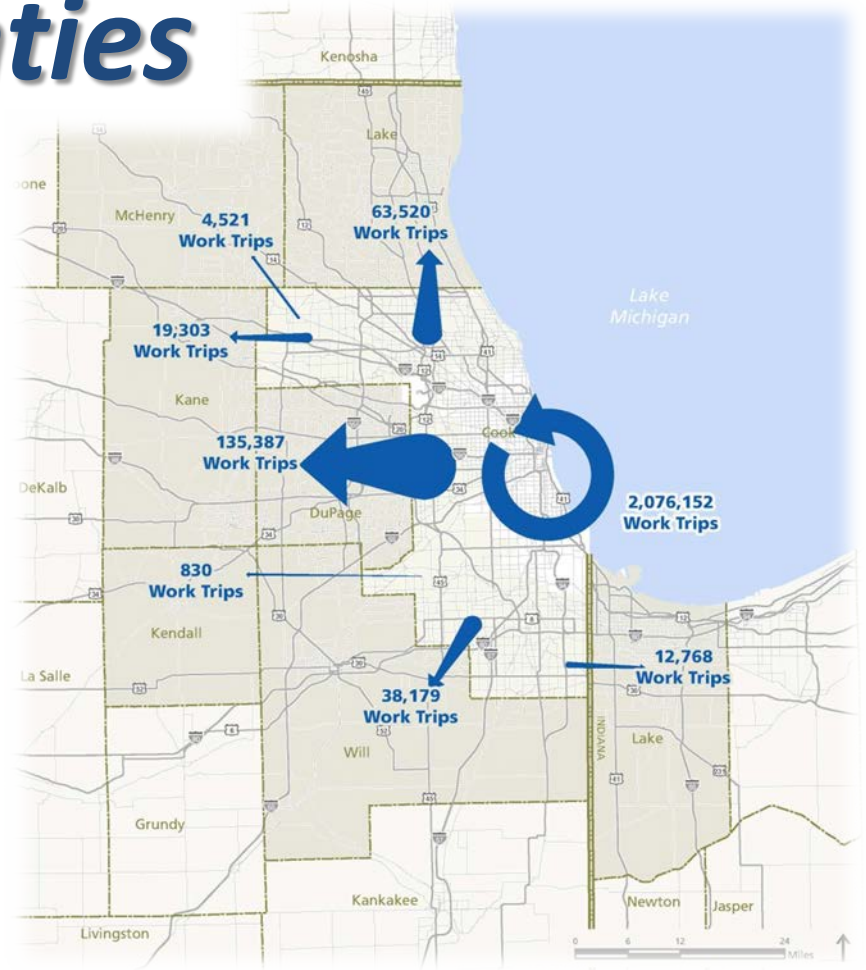
# Connecting Cook County

## *Commerce*



# Connecting Cook County

## Counties





# Connecting Cook County *Communities*

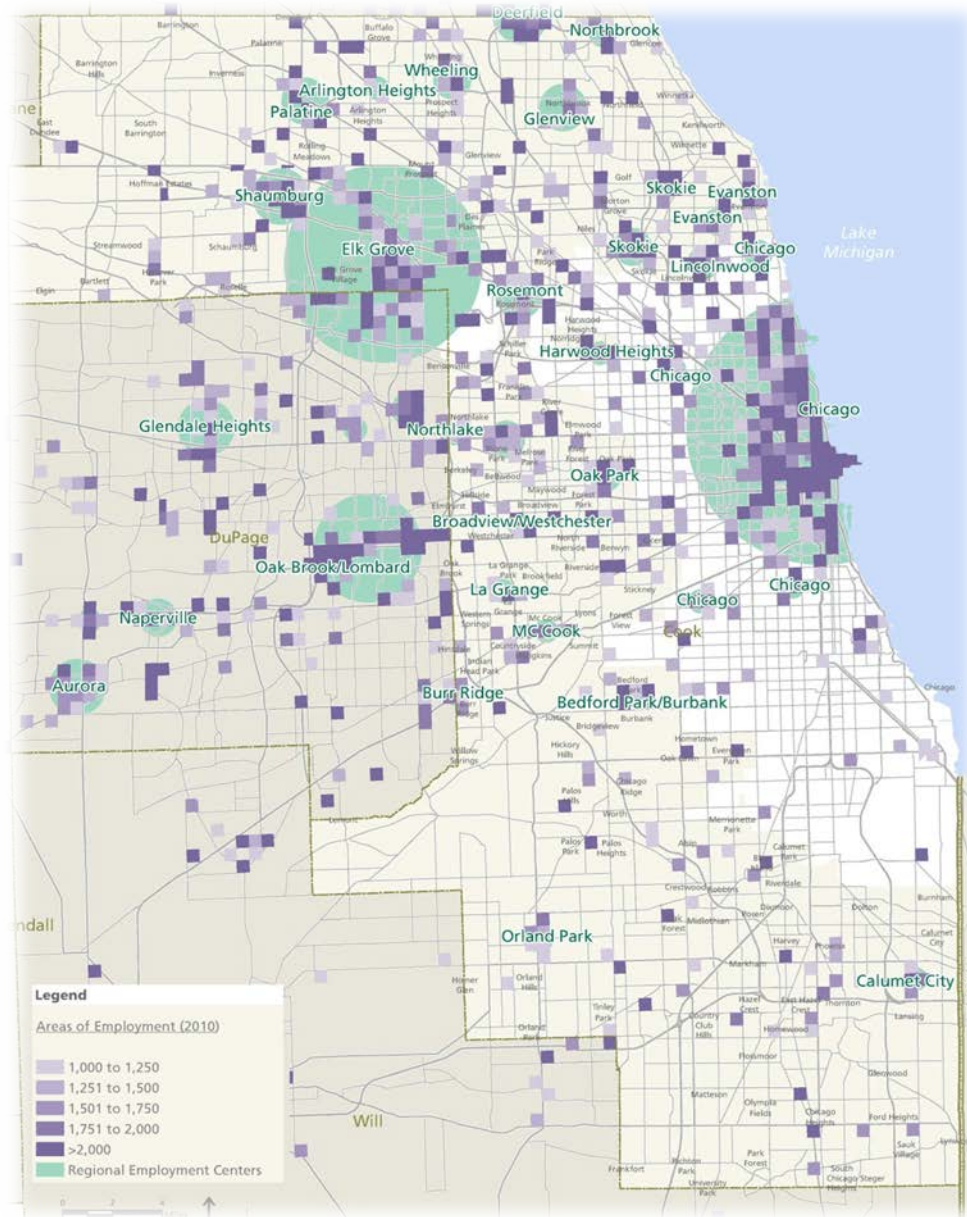




# Connecting Cook County

## *Capital*

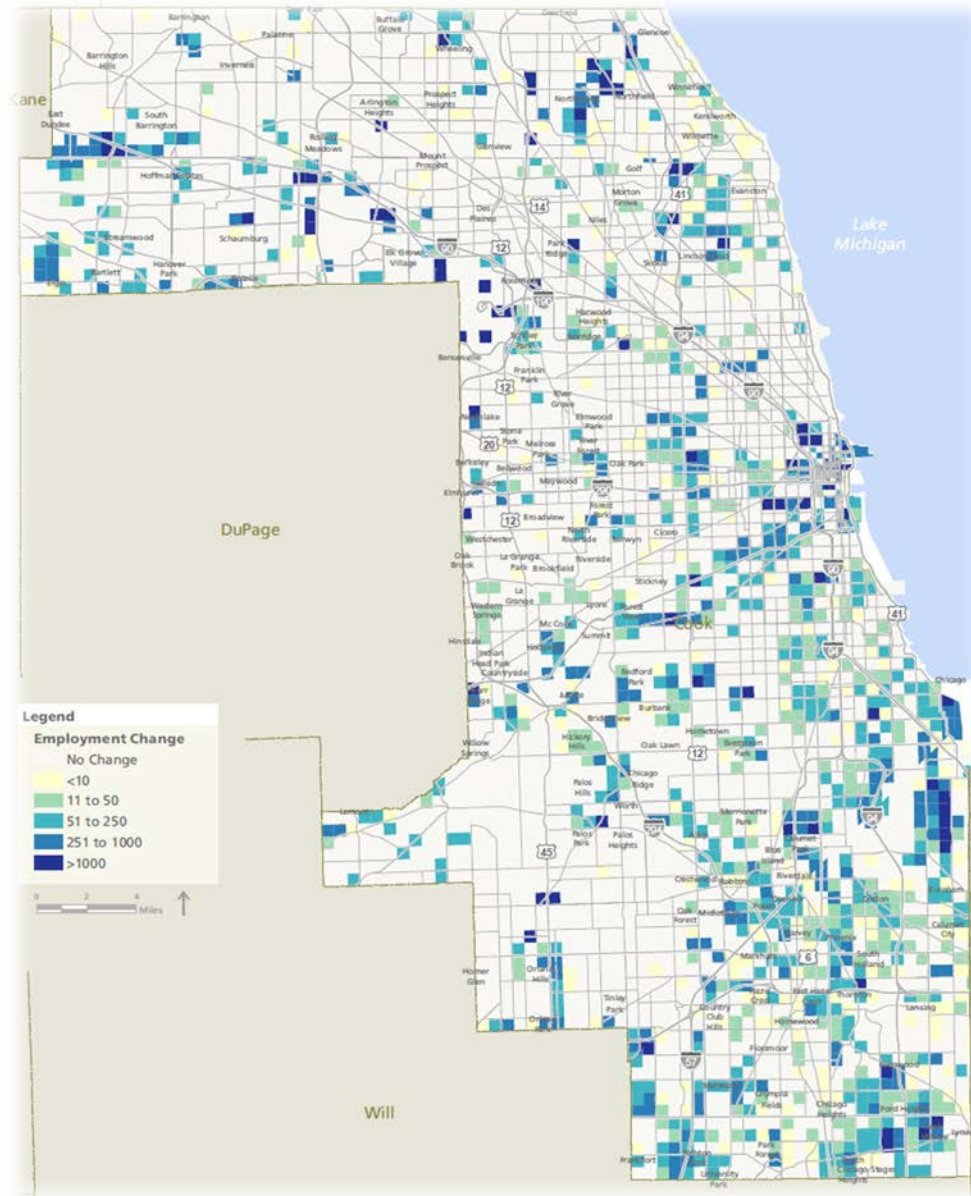
# Regional Employment Centers







# Job Growth 2010 - 2040



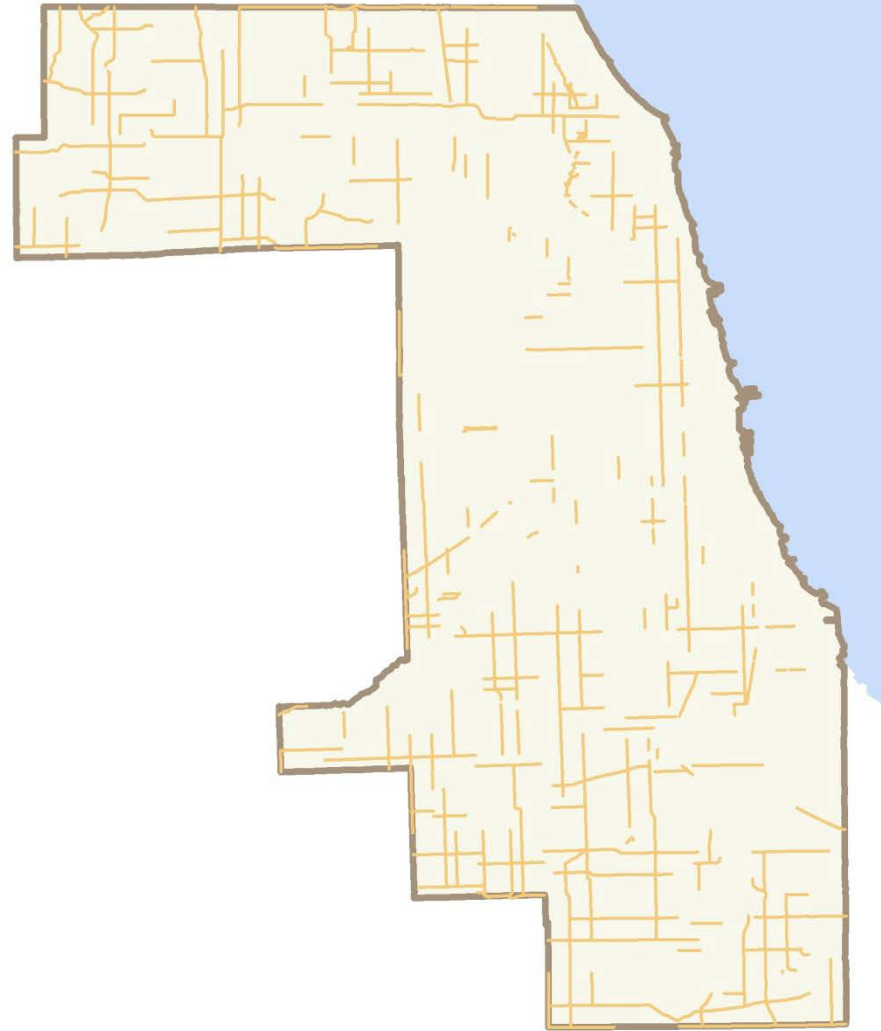


# Connecting a Complex Network



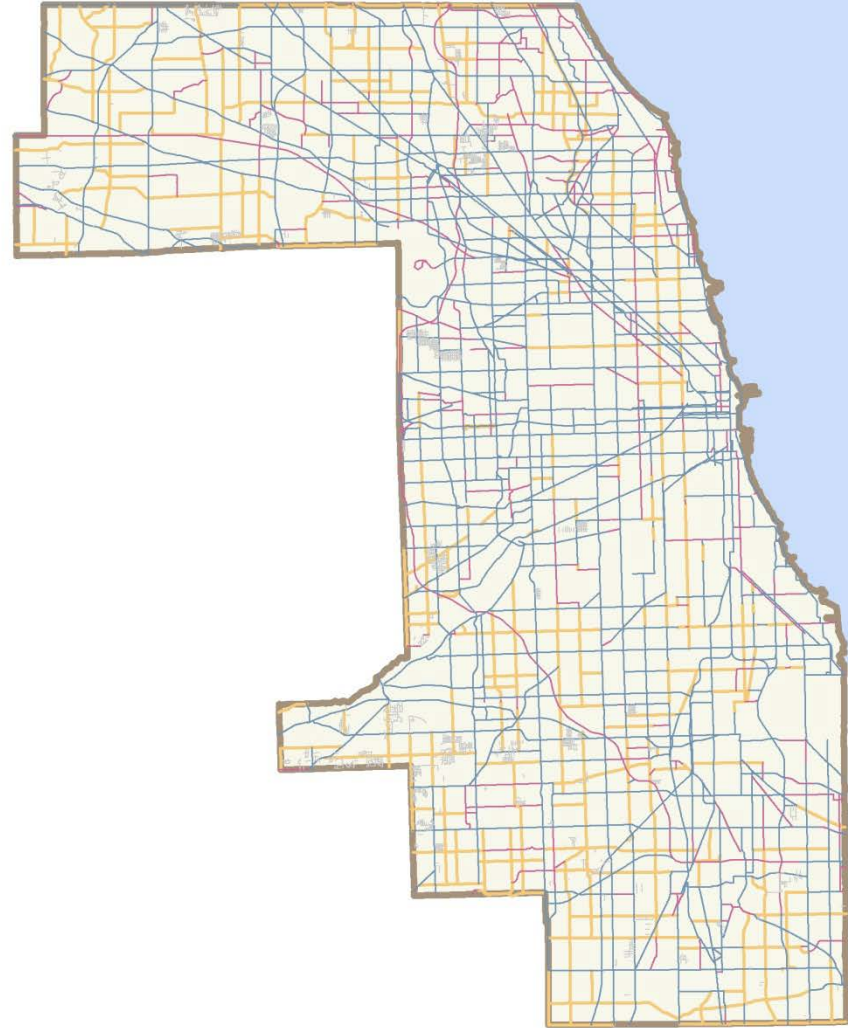
# Connecting a Complex Network

- Cook County Roads



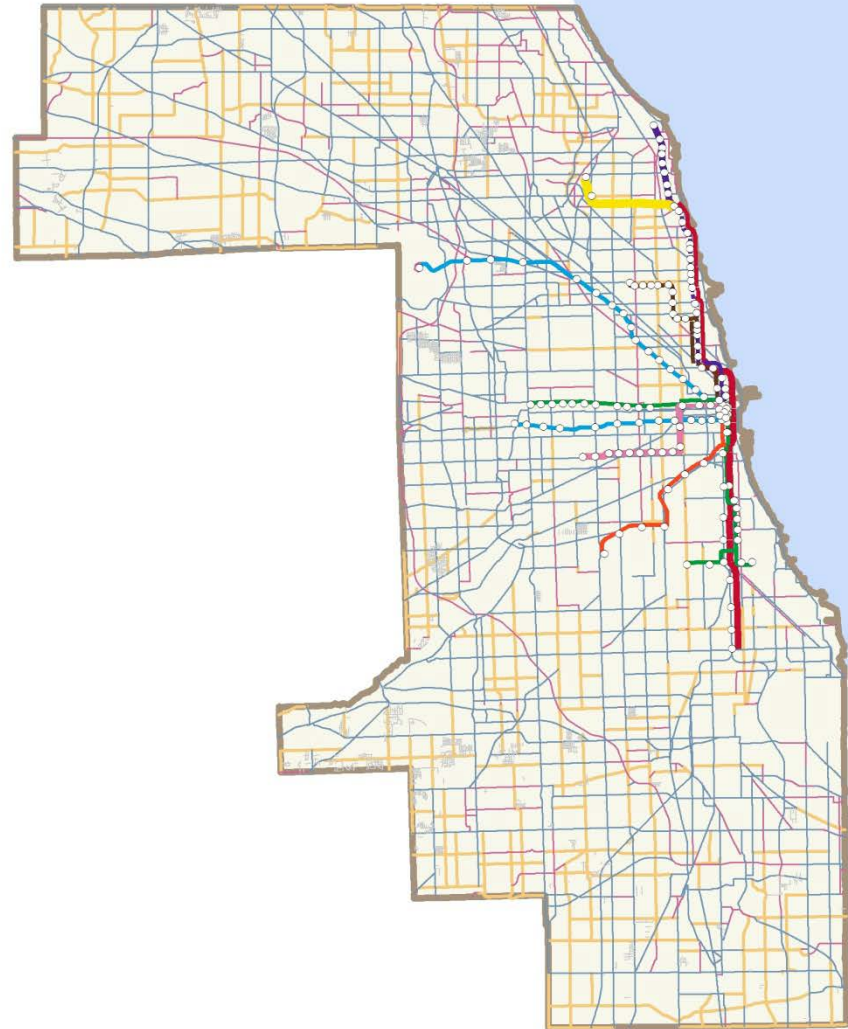
# Connecting a Complex Network

- Cook County Roads
- **Other Agency Roads**



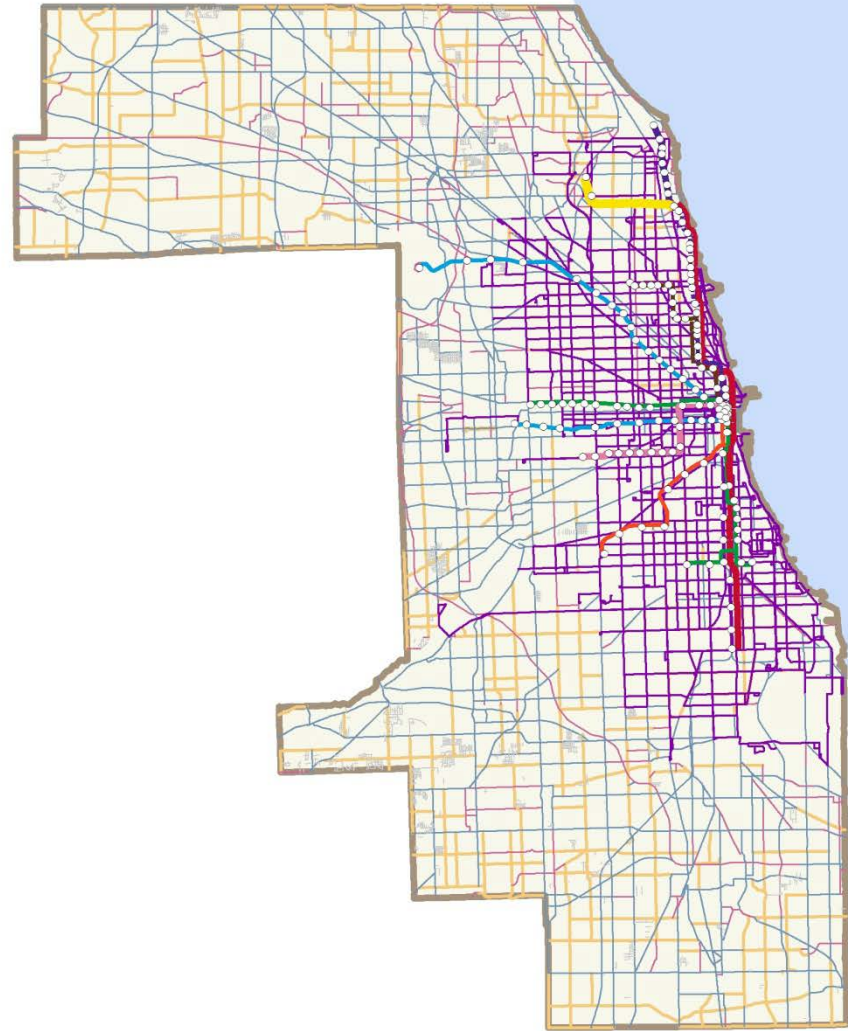
# Connecting a Complex Network

- Cook County Roads
- Other Agency Roads
- **CTA Rail Service**



# Connecting a Complex Network

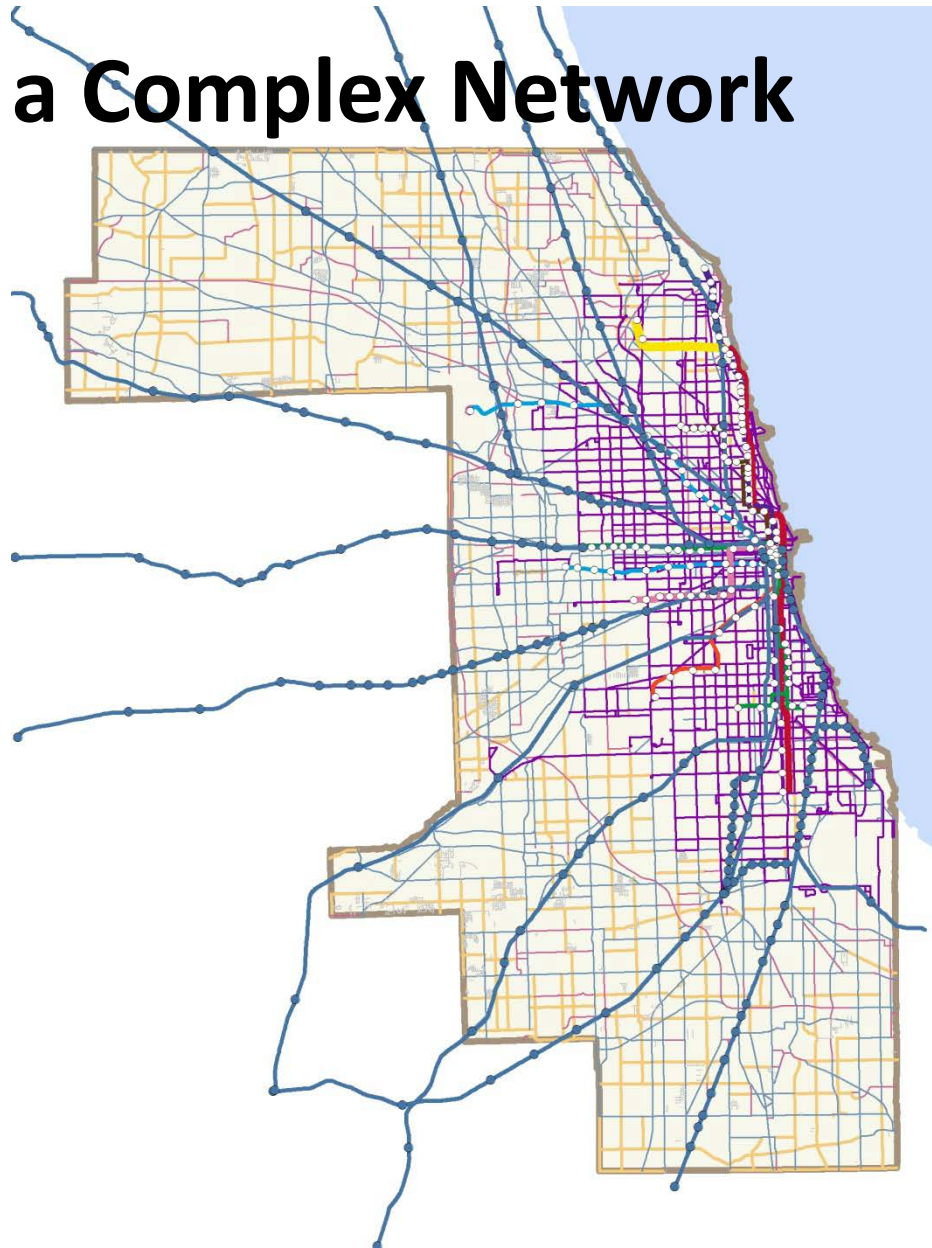
- Cook County Roads
- Other Agency Roads
- CTA Rail Service
- **CTA Bus Service**





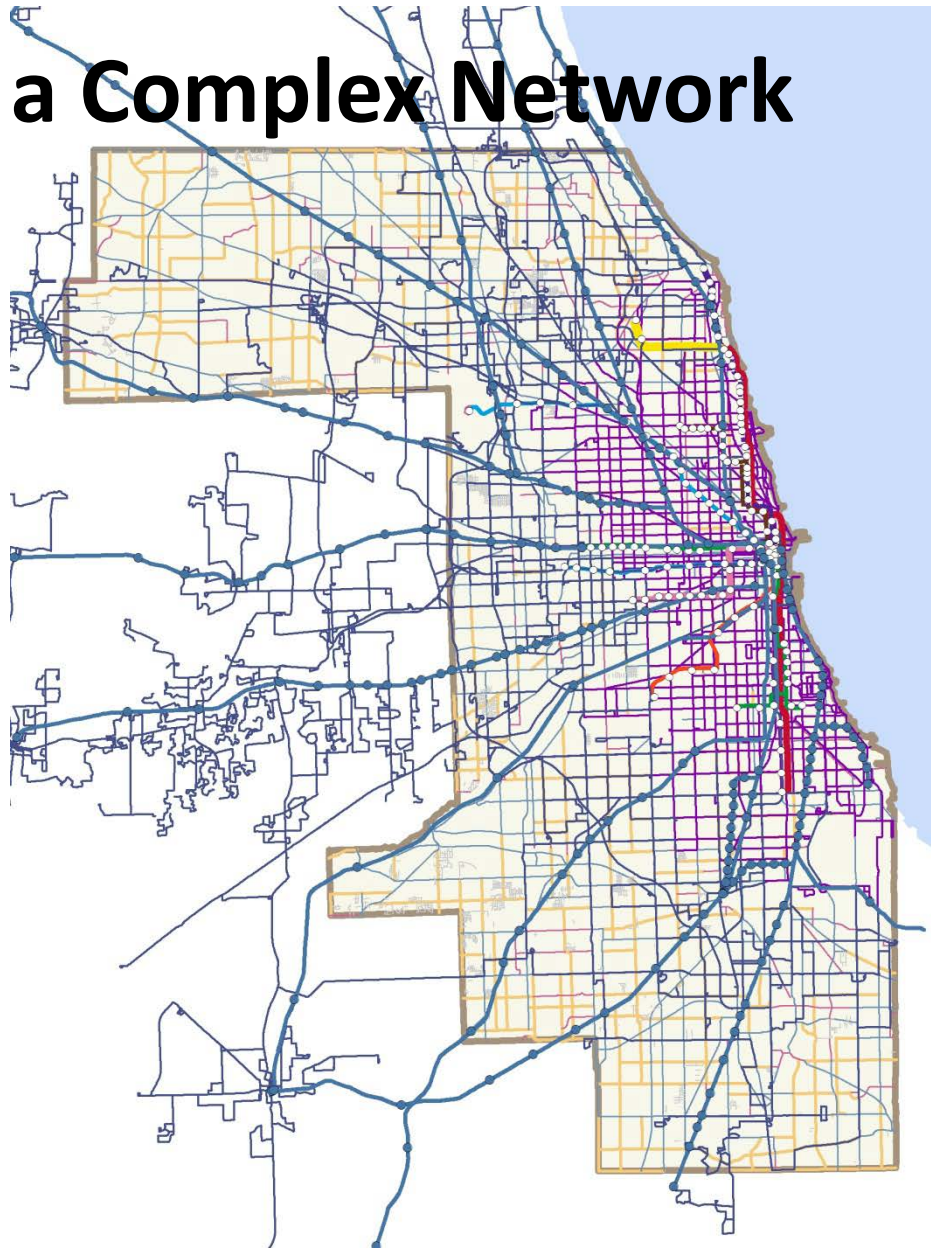
# Connecting a Complex Network

- Cook County Roads
- Other Agency Roads
- CTA Rail Service
- CTA Bus Service
- **Metra Passenger Rail**



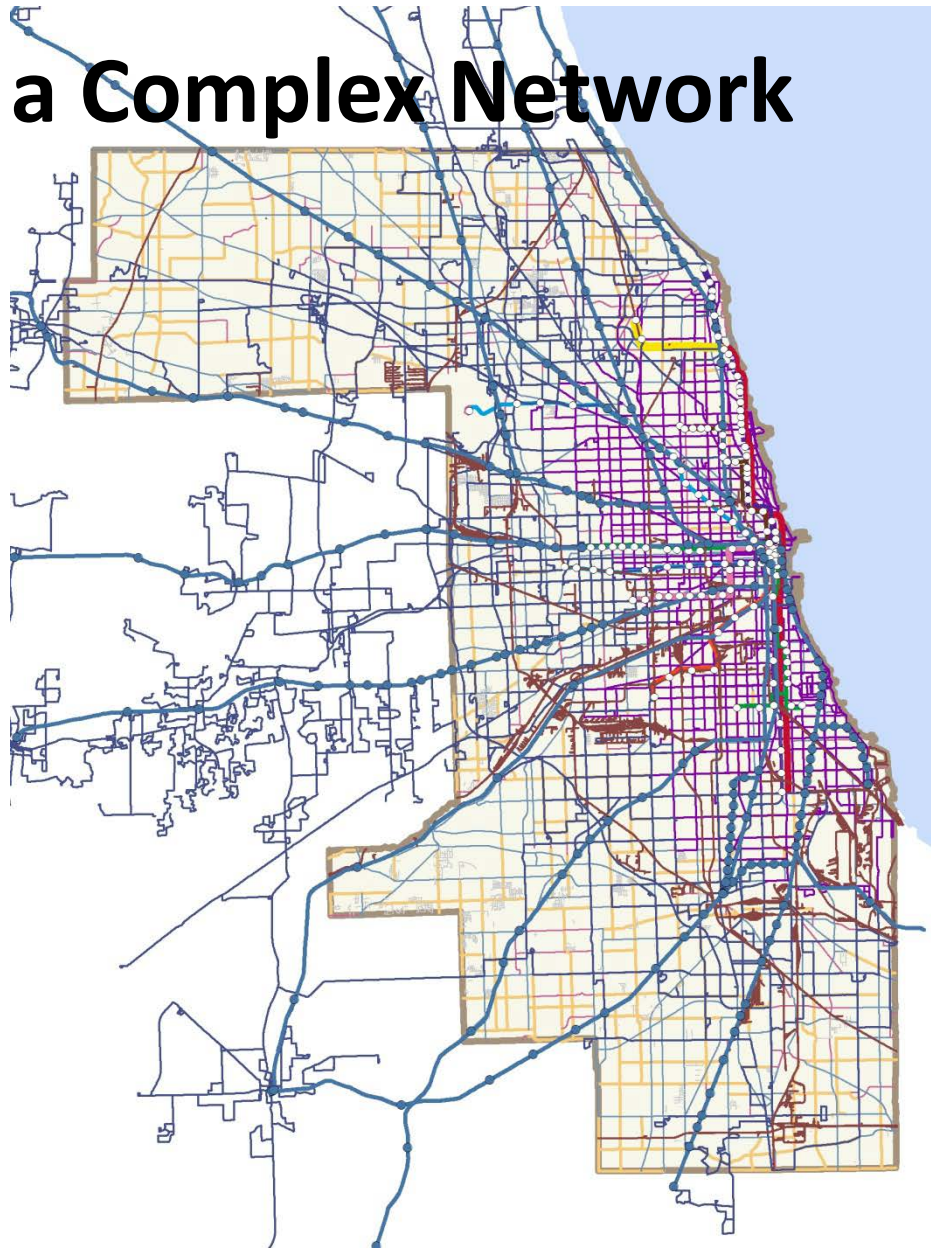
# Connecting a Complex Network

- Cook County Roads
- Other Agency Roads
- CTA Rail Service
- CTA Bus Service
- Metra Passenger Rail
- **Pace Bus Service**



# Connecting a Complex Network

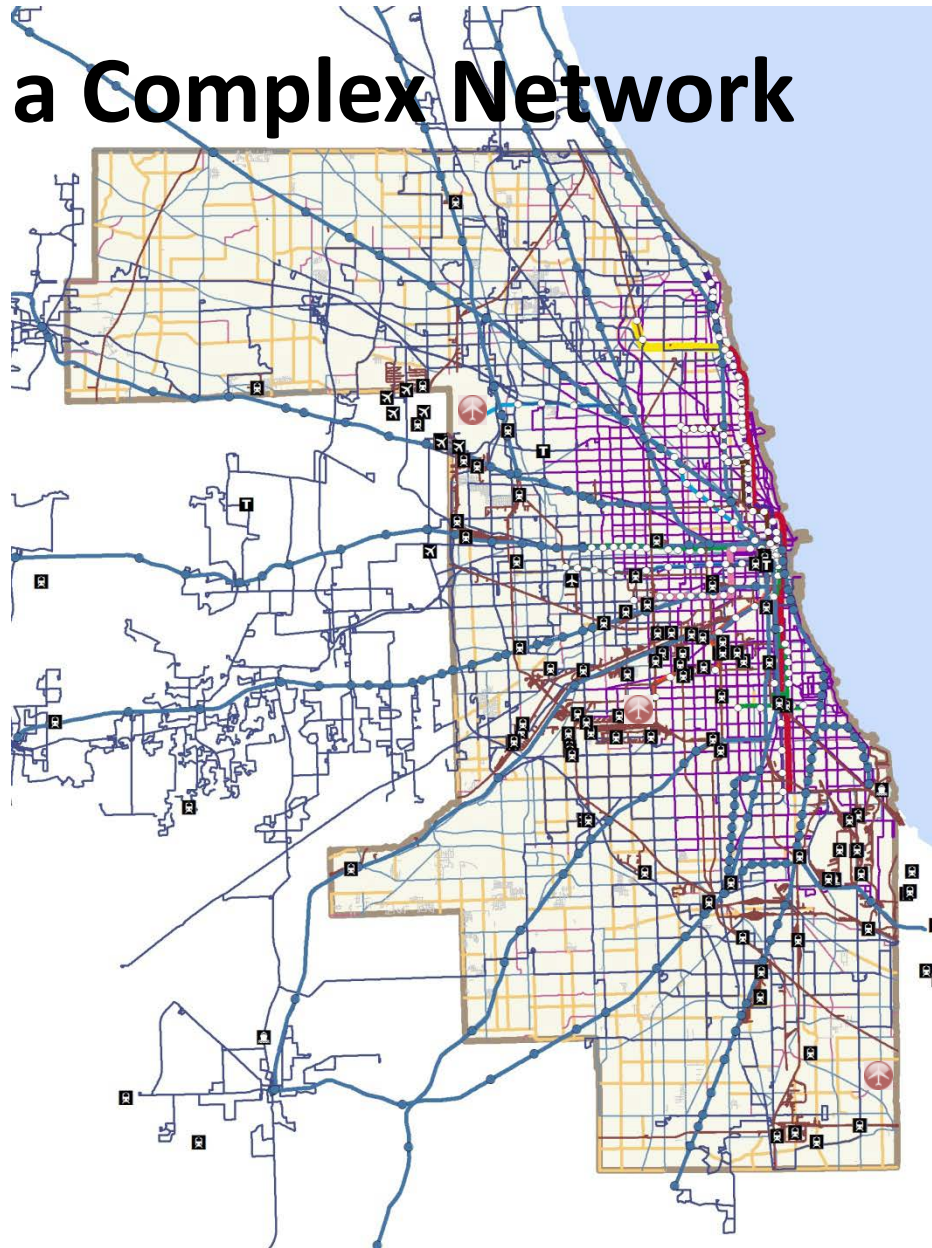
- Cook County Roads
- Other Agency Roads
- CTA Rail Service
- CTA Bus Service
- Metra Passenger Rail
- Pace Bus Service
- **Freight Rail**





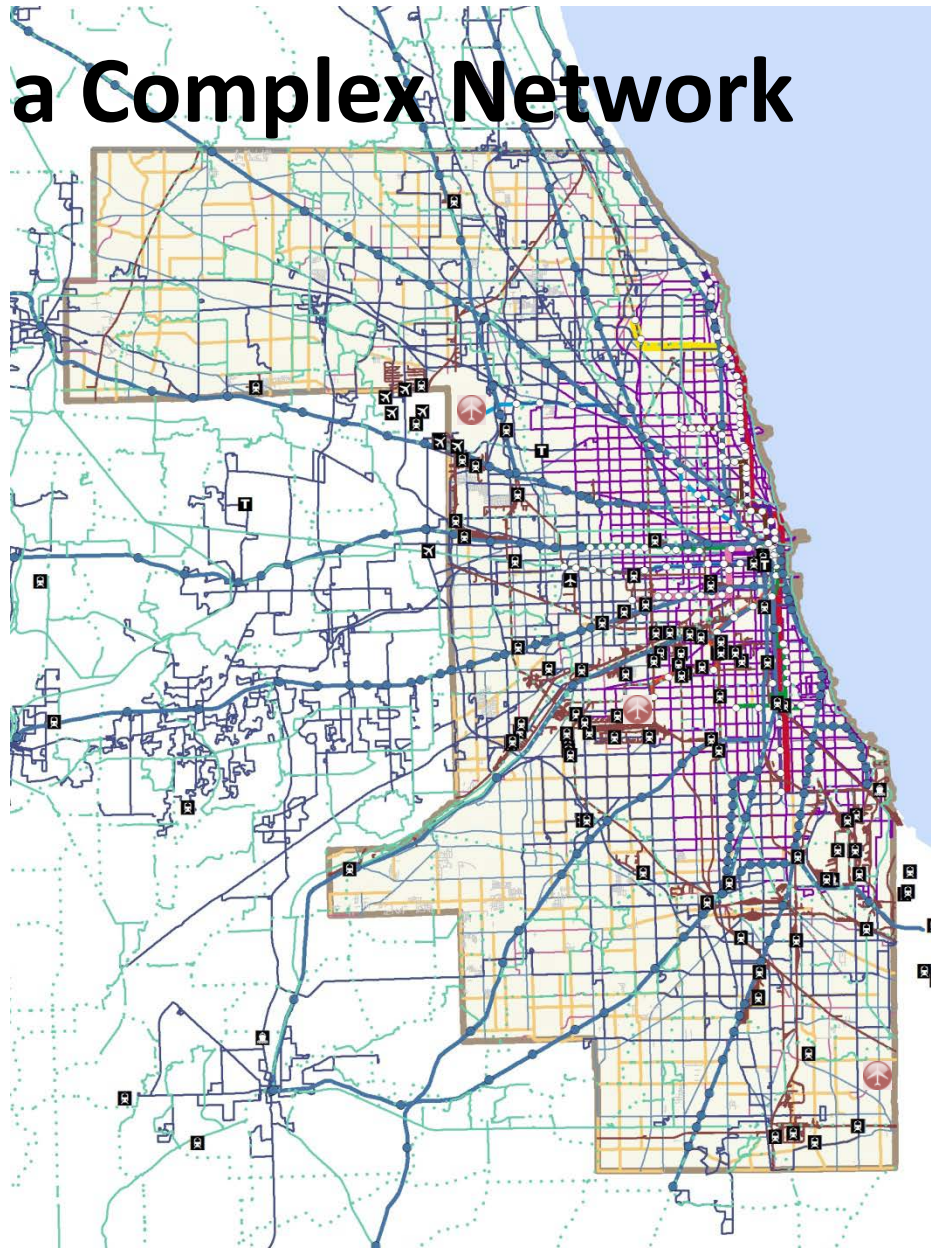
# Connecting a Complex Network

- Cook County Roads
- Other Agency Roads
- CTA Rail Service
- CTA Bus Service
- Metra Passenger Rail
- Pace Bus Service
- Freight Rail
- **Intermodal Facilities**



# Connecting a Complex Network

- Cook County Roads
- Other Agency Roads
- CTA Rail Service
- CTA Bus Service
- Metra Passenger Rail
- Pace Bus Service
- Freight Rail
- Intermodal Facilities
- **Walking and Biking**

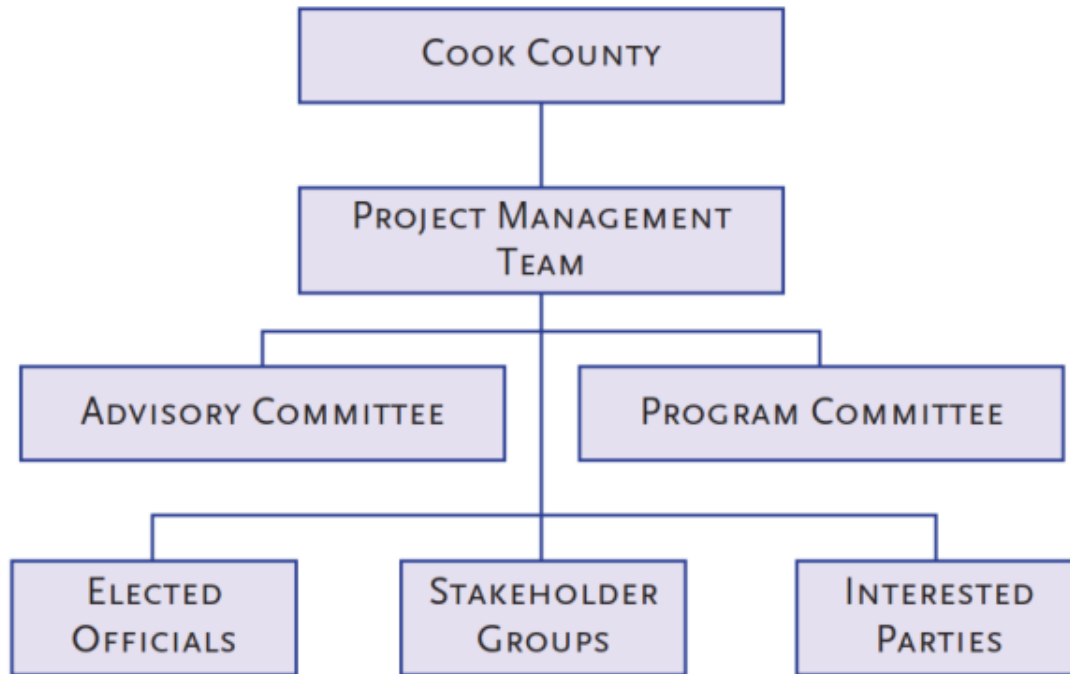




# L RTP Project Overview

- Regional vision; “Connecting Corridors”
- Identify existing and future year deficiencies
  - Evaluate all transportation modes
  - Identify mobility needs beyond fiscal constraints
- Focus on Implementation
  - Coordination
  - Partnership
  - Leveraging

# Cook County 2040 LRTP Structure



# Advisory Committee Responsibilities

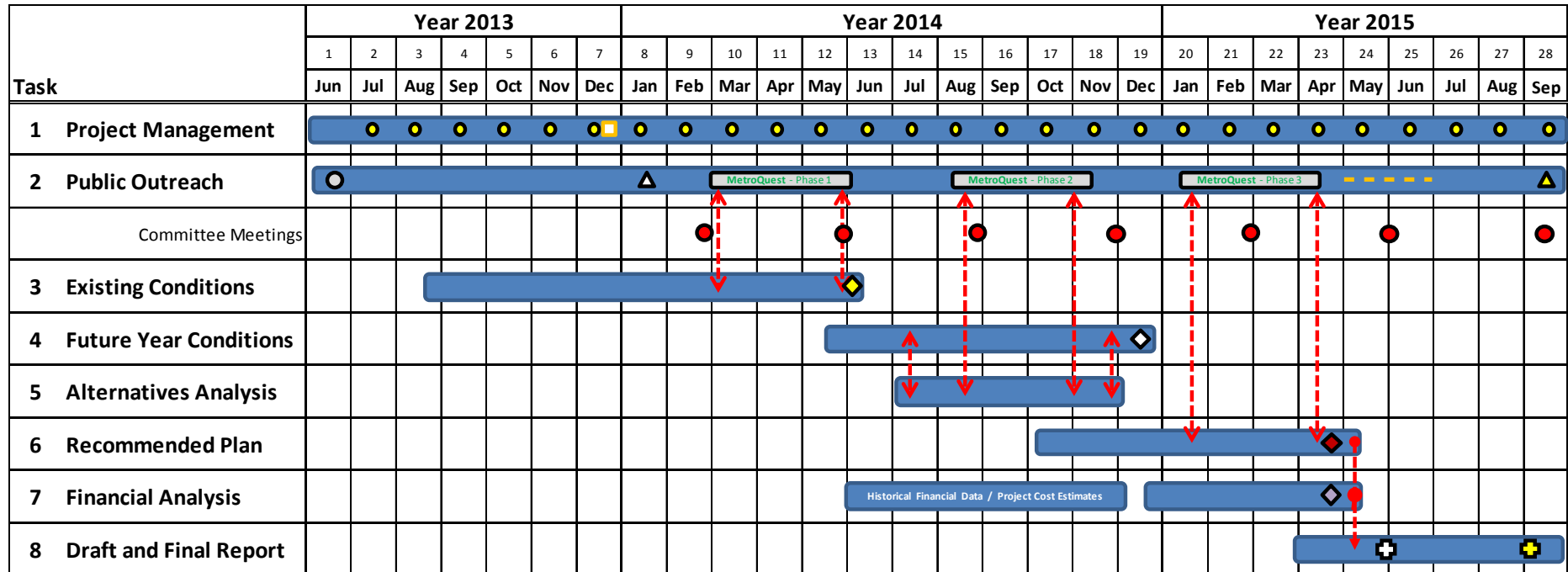
- Assist in developing the plan's vision statement
- Identify existing conditions and future scenarios
- Provide insight and expertise regarding your constituencies and organization's interests and concerns
- Promote partnership with constituents and stakeholders
- Develop a general understanding of future goals
- Advise on final LRTP recommendations
- Promote the LRTP and support its implementation

# Program Committee Responsibilities

- Assist in developing the plan's vision statement
- Provide guidance and feedback on plan elements, and technical insight into agency priorities
- Coordinate with others from their respective agencies and organizations
- Provide input for integration of various plans and major projects of other agencies
- Help strengthen and shape the LRTP
- Promote the LRTP and support its implementation



# Project Schedule



- Legend:
- Project Management Plan
  - Invoicing and Reporting
  - Visioning Session
  - Public Involvement Plan
  - Public Involvement Summary Report
  - MetroQuest
  - MetroQuest (online public engagement) - 3 Phases
  - Existing Conditions Technical Memorandum
  - Future Year Conditions Technical Memorandum
  - Recommended Plan Technical Memorandum
  - Financial Resources Technical Memorandum
  - Target Date for Advisory and Program Committee Meeting
  - Draft Report
  - Final Report
  - Anticipated time frame for public meeting(s) (additional details identified in the Public Involvement Plan)

# Break Out Session Overview

## *Purpose*

- Help us identify the issues the Cook County 2040 LRTP should address

## *Instructions*

- Break into groups assigned on name badges
- Issues discussion (10 minutes per question)
- One representative from each group will summarize the key points

# Break Out Session Questions

1. What are the key **transportation issues** the Cook County region is currently facing? What additional future issues do you foresee?
2. How do we **integrate** an all-modal transportation system (pedestrian, bikes, roads, transit, rail and freight) focused on efficient transportation and community impacts (i.e., access to employment, stronger communities, diversified economic base)?
3. How can the County best **collaborate** to ensure the LRTP process promotes coordination and integration with the existing plans of County municipalities, as well as other regional stakeholders?

# L RTP Vision Statement Concepts

- Mobility and Accessibility
- Multimodal
- Safety and Security
- Environmentally Friendly
- Economic Vitality
- System Preservation and Expansion
- Healthy Neighborhoods
- Land Use Integration



# Next Steps

- Next Committee Meeting
  - June 5, 2014 9:00 a.m. – 12:00 p.m.
- Vision Statement / Goal and Objectives
- Existing Conditions Analysis
- Public Engagement
  - MetroQuest (Phase 1 – February 2014 to May 2014)

# L RTP Website and MetroQuest

## Website



HOME ABOUT GET INVOLVED RESOURCES CONTACT US

### PRESIDENT'S CORNER



Toni Preckwinkle, President

Welcome to Connecting Cook County, the County's Long Range Transportation Plan website.

This Plan is an opportunity for us to take stock of our transportation system, look at opportunities for economic growth and find ways to improve the quality of life for our residents. In the past, County plans have laid out a vision to create extraordinary assets, such as the forest preserves and our major expressways.

As we know, times change and strategies and investments must change with them. This plan will gauge what's working well—and not so well—relative to transportation, economic development and our quality of life. The plan

will also assess how the region is expected to grow and change over the next 25 years and anticipate the challenges those changes will pose for us.

I encourage everyone—whether you live here, work here or own a business here—to contribute your ideas to this plan by taking the survey on the right side of this page. You can stay connected by visiting this website and registering for e-mail alerts. Only with your input can we ensure a course of action that benefits Cook County and its residents for decades to come.

Sincerely,  
*Toni Preckwinkle*

Toni Preckwinkle, President  
Cook County Board of Commissioners

### TOP NEWS



READ MORE

### TAKE OUR SURVEY



WELCOME

## MetroQuest

Your voice counts! Help shape the future of transportation in Cook County!



At the direction of Cook County Board President Toni Preckwinkle, the Department of Transportation and Highways is developing a long range transportation plan. Our goal is to improve access to reliable and safe transportation, as well as increase economic vitality and opportunity, for all Cook County residents.

Cook County is the 2nd most populous county in the United States. Its population is expected to increase another 24% by the year 2040.

Help us identify existing and future year transportation needs - including regional highways and local roads, rail and transit systems, pedestrian and bicycle facilities - through the year 2040.

Please take a few minutes to complete this survey!

Click here to begin



2 PRIORITIES  
 3 OPPORTUNITIES  
 4 YOUR OPINION COUNTS

[www.connectingcookcounty.org](http://www.connectingcookcounty.org)



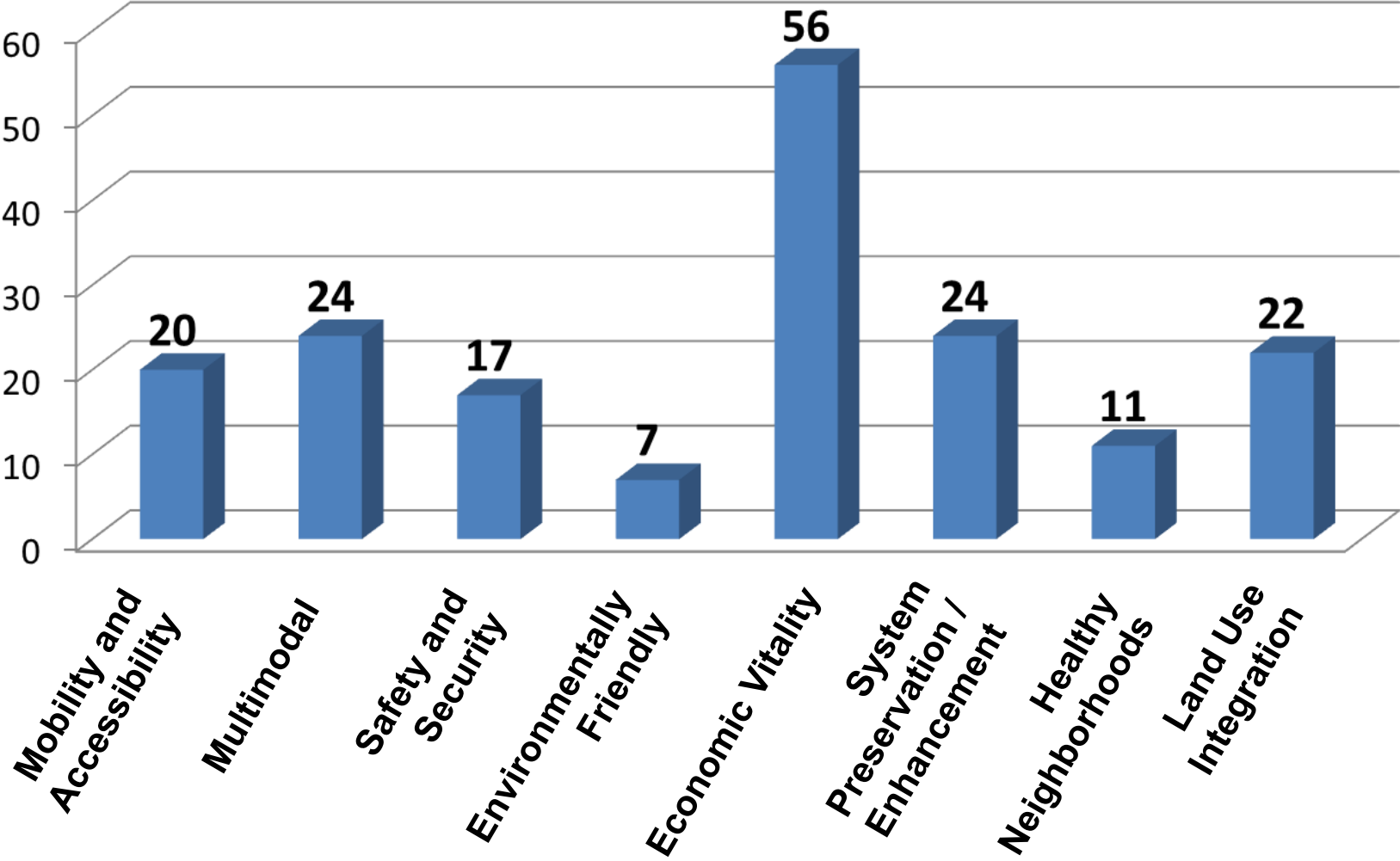
DEPARTMENT OF TRANSPORTATION AND HIGHWAYS

# First Kiosk Locations



- Lansing Public Library
- Chicago Heights Public Library
- North Pulaski Library
- Mount Prospect Public Library
- Daley College
- Prairie Center for the Arts (Schaumburg)

# Vision Concept Results





# Thank you for your participation!



**John Yonan, P.E.  
Superintendent**

**Department of Transportation and Highways**

**Email: [john.yonan@cookcountyil.gov](mailto:john.yonan@cookcountyil.gov)**

**Phone: 312-603-1601**